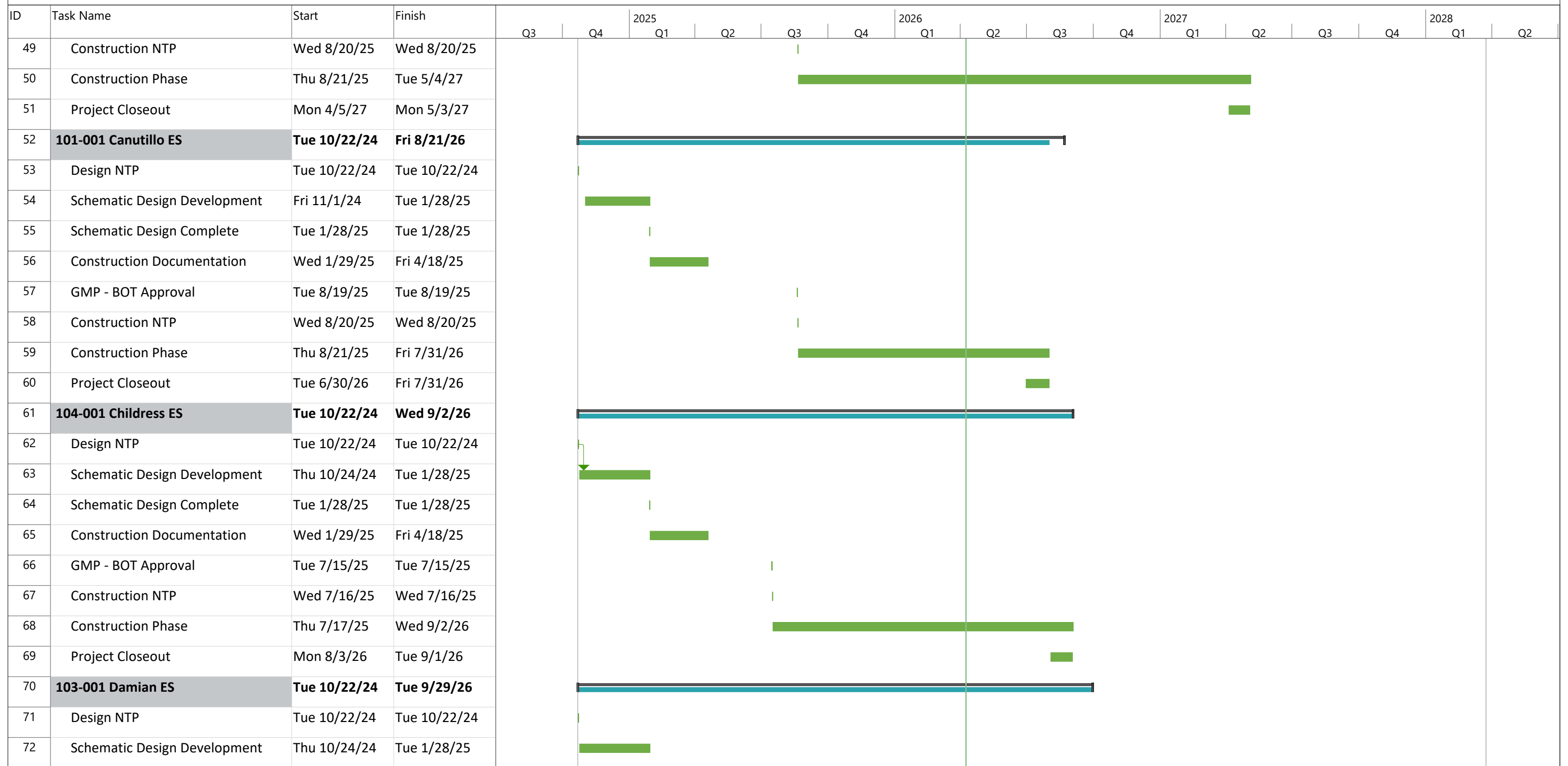


Task		Project Summary		Manual Task		Start-only		Deadline	
Split		Inactive Task		Duration-only		Finish-only		Progress	
Milestone		Inactive Milestone		Manual Summary Rollup		External Tasks		Manual Progress	
Summary		Inactive Summary		Manual Summary		External Milestone			

ID	Task Name	Start	Finish	2025				2026				2027				2028			
				Q3	Q4	Q1	Q2	Q3	Q4	Q1	Q2	Q3	Q4	Q1	Q2	Q3	Q4	Q1	Q2
25	Schematic Design Complete	Tue 1/28/25	Tue 1/28/25																
26	Design Development	Wed 1/29/25	Fri 5/30/25			█	█												
27	Construction Documentation	Mon 6/2/25	Fri 10/17/25				█	█											
28	GMP - BOT Approval	Tue 11/18/25	Tue 11/18/25																
29	Construction NTP	Wed 11/19/25	Wed 11/19/25																
30	Construction Phase	Thu 11/20/25	Mon 8/2/27							█	█	█	█	█	█				
31	Project Closeout	Thu 6/17/27	Mon 8/2/27													█			
32	003-001 NW Early College HS	Tue 10/22/24	Thu 3/23/28	█															
33	Design NTP	Tue 10/22/24	Wed 10/22/25	█															
34	Schematic Design Development	Mon 10/28/24	Tue 1/28/25	█															
35	Schematic Design Complete	Tue 1/28/25	Tue 1/28/25																
36	Design Development	Wed 1/29/25	Tue 4/22/25			█	█												
37	Construction Documentation	Wed 4/23/25	Fri 8/8/25				█	█											
38	GMP - BOT Approval	Tue 9/23/25	Tue 9/23/25																
39	Construction NTP	Mon 2/23/26	Tue 2/24/26																
40	Construction Phase	Wed 2/25/26	Thu 3/23/28							█	█	█	█	█	█	█	█		
41	Project Closeout	Wed 12/1/27	Wed 3/22/28														█		
42	Renovations	Wed 10/30/24	Fri 7/16/27	█															
43	001-001 Canutillo HS	Tue 10/22/24	Sun 5/30/27	█															
44	Design NTP	Tue 10/22/24	Tue 10/22/24																
45	Schematic Design Development	Fri 11/1/24	Tue 1/28/25	█															
46	Schematic Design Complete	Tue 1/28/25	Tue 1/28/25																
47	Construction Documentation	Wed 1/29/25	Tue 6/3/25			█	█												
48	GMP - BOT Approval	Tue 8/19/25	Tue 8/19/25																

Task	█	Project Summary	▬	Manual Task	█	Start-only	[Deadline	↓
Split	⋯	Inactive Task	▬	Duration-only	▬	Finish-only]	Progress	▬
Milestone	◆	Inactive Milestone	◆	Manual Summary Rollup	█	External Tasks	▬	Manual Progress	▬
Summary	▬	Inactive Summary	▬	Manual Summary	▬	External Milestone	◆		



Task		Project Summary		Manual Task		Start-only		Deadline	
Split		Inactive Task		Duration-only		Finish-only		Progress	
Milestone		Inactive Milestone		Manual Summary Rollup		External Tasks		Manual Progress	
Summary		Inactive Summary		Manual Summary		External Milestone			

ID	Task Name	Start	Finish	2025				2026				2027				2028		
				Q3	Q4	Q1	Q2	Q3	Q4	Q1	Q2	Q3	Q4	Q1	Q2	Q3	Q4	Q1
73	Schematic Design Complete	Tue 1/28/25	Tue 1/28/25															
74	Construction Documentation	Wed 1/29/25	Mon 4/14/25			█												
75	GMP - BOT Approval	Tue 7/15/25	Tue 7/15/25															
76	Construction NTP	Wed 7/16/25	Wed 7/16/25															
77	Construction Phase	Thu 7/17/25	Tue 9/29/26					█	█	█	█	█	█	█	█	█	█	█
78	Project Closeout	Fri 8/28/26	Tue 9/29/26															█
79	105-001 Garcia ES	Tue 7/21/26	Thu 9/17/26															█
80	Design NTP	Tue 10/22/24	Tue 10/22/24															
81	Schematic Design Development	Thu 10/24/24	Tue 1/28/25	█														
82	Schematic Design Complete	Tue 1/28/25	Tue 1/28/25															
83	Construction Documentation	Wed 1/29/25	Mon 4/14/25			█												
84	GMP - BOT Approval	Tue 7/15/25	Tue 7/15/25															
85	Construction NTP	Wed 7/16/25	Wed 7/16/25															
86	Construction Phase	Thu 7/17/25	Thu 9/17/26					█	█	█	█	█	█	█	█	█	█	█
87	Project Closeout	Mon 8/3/26	Thu 9/17/26															█
88	106-001 Reyes ES	Tue 10/22/24	Fri 8/21/26															█
89	Design NTP	Tue 10/22/24	Tue 10/22/24															
90	Schematic Design Development	Thu 10/24/24	Tue 1/28/25	█														
91	Schematic Design Complete	Tue 1/28/25	Tue 1/28/25															
92	Construction Documentation	Wed 1/29/25	Thu 4/10/25			█												
93	GMP - BOT Approval	Tue 8/19/25	Tue 8/19/25															
94	Construction NTP	Wed 8/20/25	Wed 8/20/25															
95	Construction Phase	Thu 8/21/25	Thu 4/16/26					█	█	█	█	█	█	█	█	█	█	█
96	Project Closeout	Tue 3/17/26	Thu 4/16/26															█

Task		Project Summary		Manual Task		Start-only		Deadline	
Split		Inactive Task		Duration-only		Finish-only		Progress	
Milestone		Inactive Milestone		Manual Summary Rollup		External Tasks		Manual Progress	
Summary		Inactive Summary		Manual Summary		External Milestone			